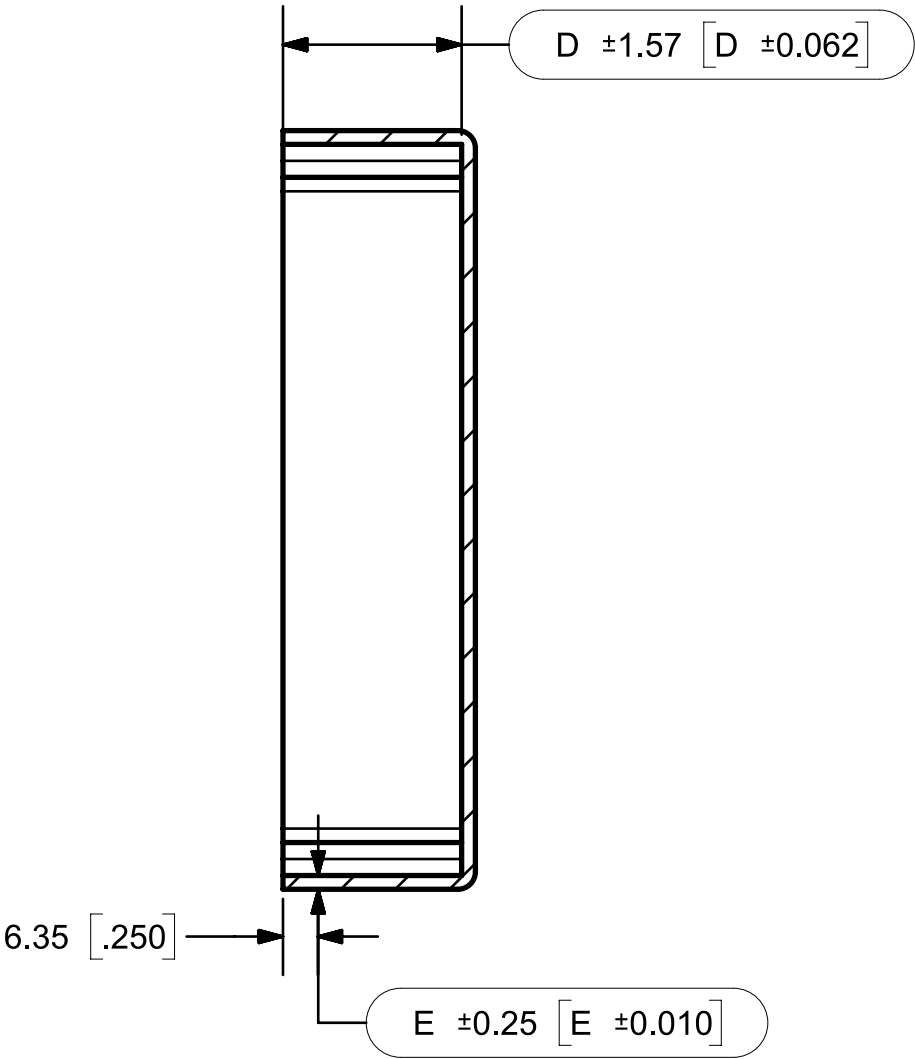
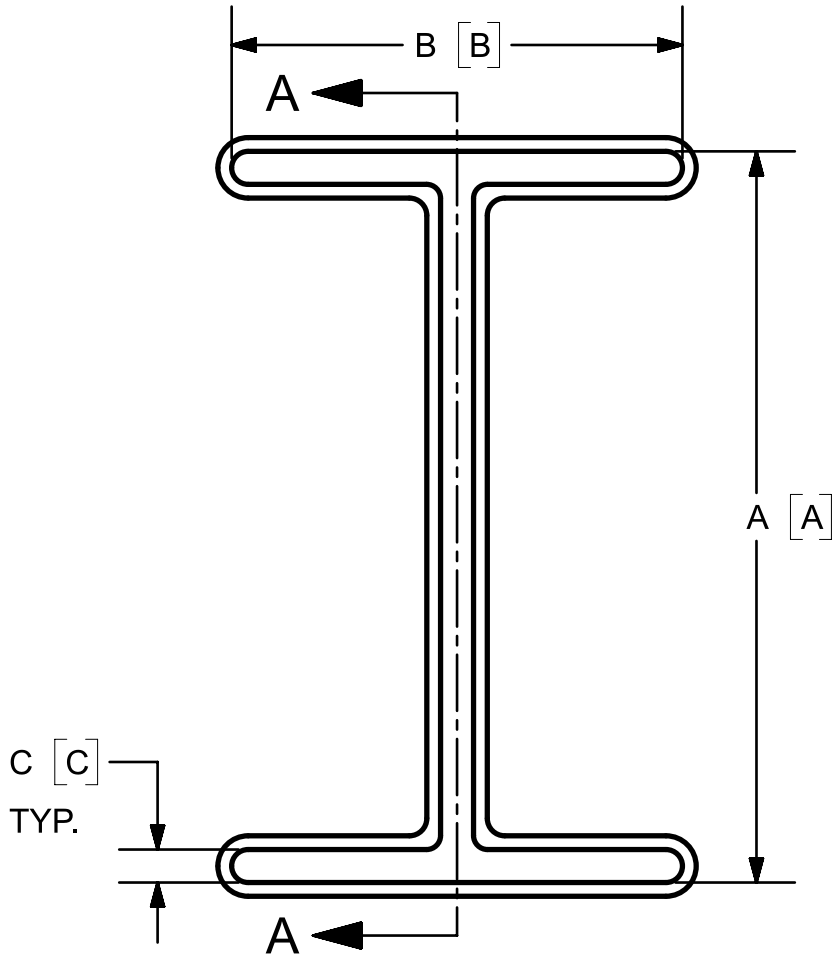


DIMENSION	ITEM REFERENCE	
	CM160 (LVCM160)	CM969 (LVCM969)
A - INTERNAL LENGTH	127.00 [5.000]	150.00 [5.906]
B - INTERNAL WIDTH	76.00 [2.992]	75.00 [2.953]
C - INTERNAL THICKNESS	6.00 [0.236]	5.00 [0.197]
D - CAP INTERNAL LENGTH	35.00 [1.378]	35.00 [1.378]
E - WALL THICKNESS	2.50 [0.098]	1.85 [0.073]
MATERIAL	PVC	PVC
SHORE HARDNESS	70A +/- 5	70A +/- 5
COLOR	YELLOW	YELLOW




SECTION A-A

- NOTES:
- 1. DIMENSIONS IN [] ARE INCHES.
 - 2. DIMENSIONS INSIDE OVALS ARE INSPECTION DIMENSIONS. ALL OTHER DIMENSIONS ARE REFERENCE.
 - 3. SURFACE TYPE: SMOOTH WITH MEDIUM GLOSS
 - 4. REFERENCE DRAWING ONLY.



REV	DESCRIPTION	DATE	BY	APP



Sinclair & Rush


Global Manufacturer of Plastic, Rubber & Foam Components

SINCLAIR AND RUSH LTD.
19 LAKER ROAD,
ROCHESTER
KENT, ME1 3QX UK
WWW.SINCLAIR-RUSH.CO.UK

THE VINYL DIP MOLDING PROCESS RESULTS IN VARYING WALL THICKNESS. WALL THICKNESS IS MEASURED AT SPECIFIED POINT ONLY.

ALL DIMENSIONS AND SYMBOLS CONFORM TO ANSI Y14.5

THIRD ANGLE PROJECTION



THIS DRAWING CONTAINS CONFIDENTIAL INFORMATION OF SINCLAIR AND RUSH LTD. AND IS NOT TO BE COPIED, USED OR, DISCLOSED TO OTHERS WITHOUT THE EXPRESS WRITTEN CONSENT OF SINCLAIR AND RUSH LTD.

DRW	WMB	DATE	25-OCT-22
CK	GSG	DATE	28-OCT-22
APP	GSG	DATE	28-OCT-22

SCALE 1:1.375

DESCRIPTION

I-BEAM CAP, ITEM REFERENCE TABLE

SIZE	B	SHEET	1 OF 1	PART / DRAWING NUMBER	CP4529	REV	0
------	---	-------	--------	-----------------------	--------	-----	---