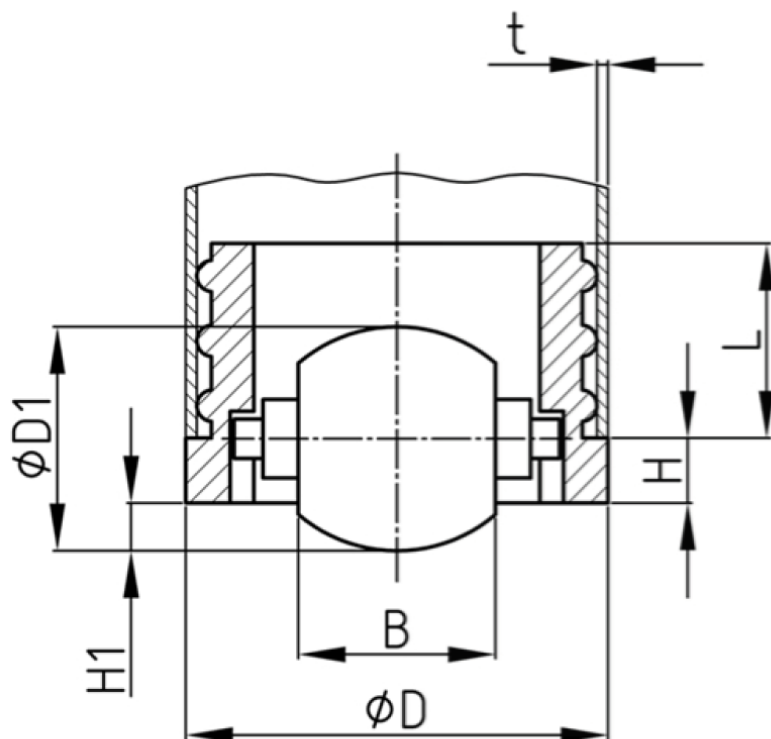




Sinclair & Rush

Global Manufacturer of Plastic, Rubber & Foam Components

# UNCONTROLLED – Ref Drawing



| B<br>mm | D<br>mm | D1<br>mm | H<br>mm | H1<br>mm | L<br>mm | T<br>mm | Load<br>kg |
|---------|---------|----------|---------|----------|---------|---------|------------|
| 12.0    | 32.0    | 20.0     | 3.0     | 4.0      | 24.0    | 1.5     | 25         |

The information contained herein is believed to be reliable, but no representations, guarantees or warranties of any kind are made as to its accuracy, suitability for particular applications or the results to be obtained thereof. The information is based on laboratory work with small-scale equipment and does not necessarily indicate end product performance. Because of the variation in methods, conditions and equipment used commercially in processing these materials, no warranties or guarantees are made as to the suitability of the products for the application disclosed. Full-scale testing and end product performance are the responsibility of the user. Sinclair and Rush Limited shall not be liable for and the customer assumes all risk and liability of any use or handling of any material beyond Sinclair and Rush Limited's direct control. Sinclair and Rush Limited MAKES NO WARRANTIES, EXPRESS OR IMPLIED, INCLUDING BUT NOT LIMITED TO, THE IMPLIED WARRANTIES OF MERCHANTABILITY AND FITNESS FOR A PARTICULAR PURPOSE. Nothing contained herein is to be considered as permission, recommendations, nor as an inducement to practice any patented invention without permission of the patent owner.



**Sinclair & Rush Ltd**

|             |   |
|-------------|---|
| Item Number | RTI1489   |
| Description | Tubing Inserts-ROUND-GLIDE CASTOR-<br>32.00MM-1.50MM-BLACK/GREY-WHEEL<br>HAS 4.00MM CLEARANCE |
| Colour      | Black/Grey  |
| Material    | Body: Nylon<br>Bolt: Steel<br>Castor: TPE   |